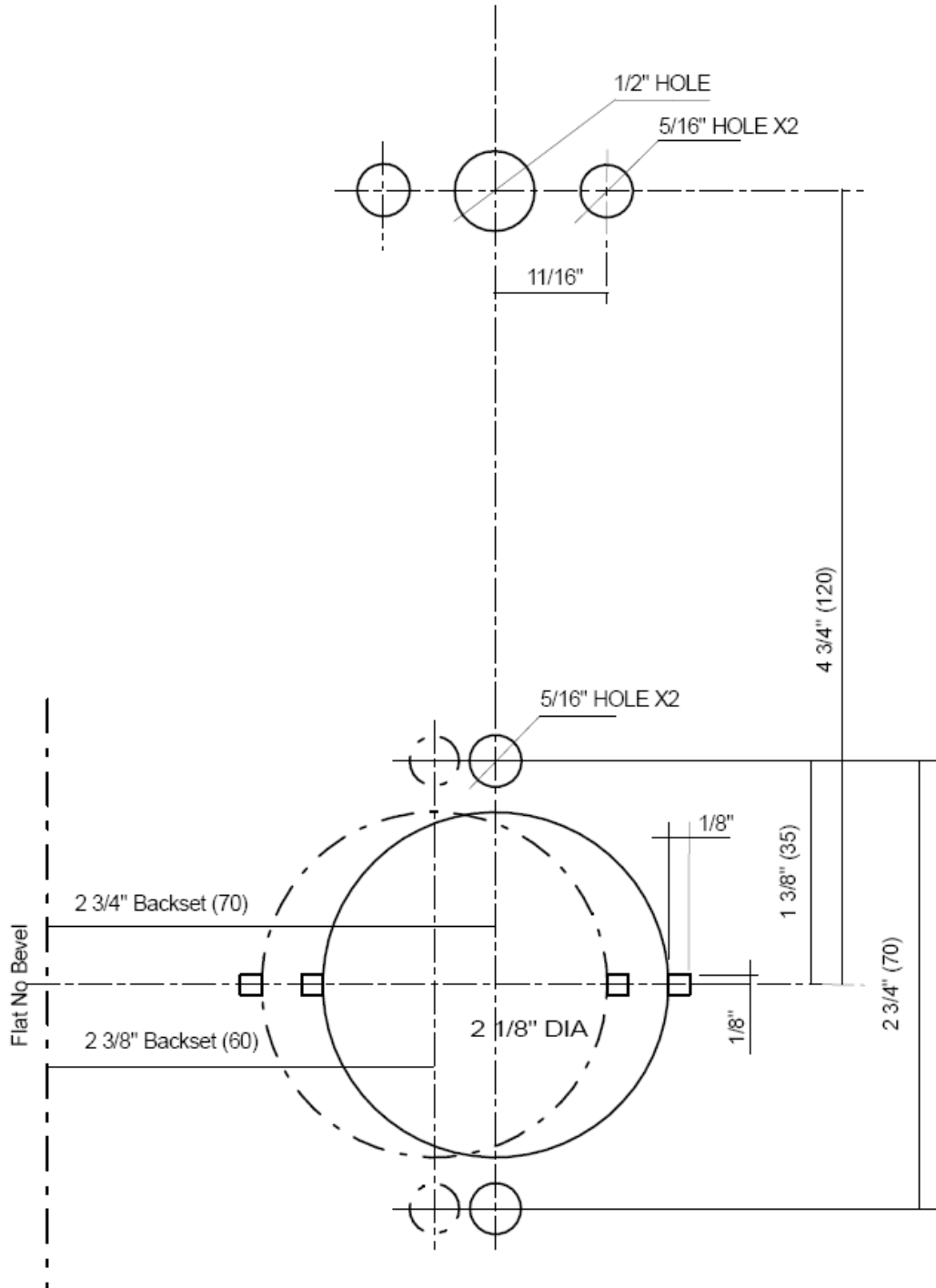
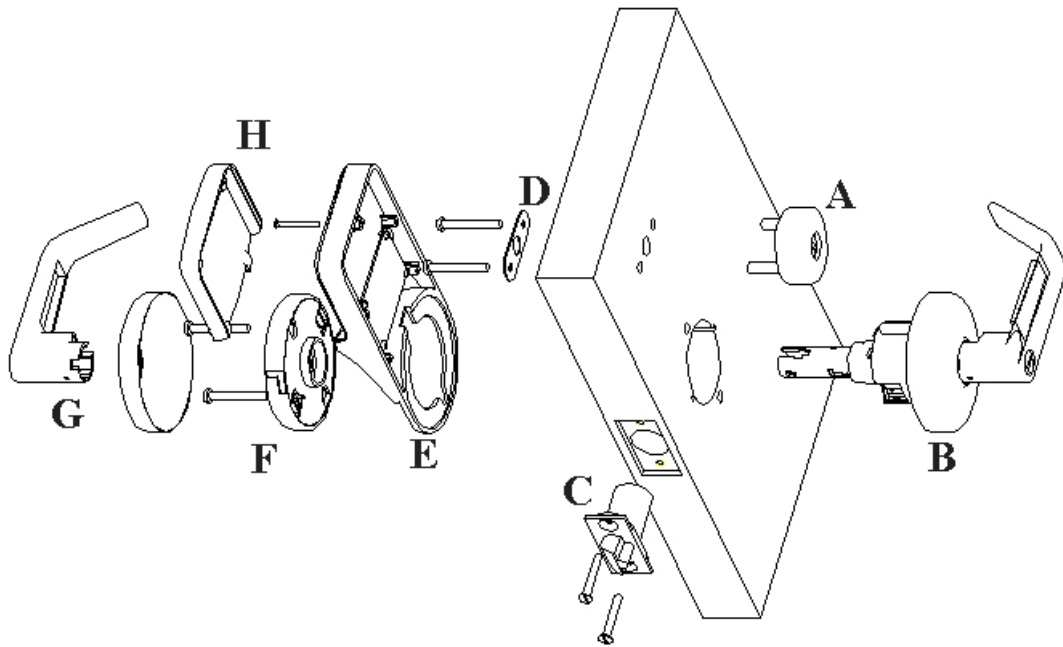


Eternity-II Installation Manual





- A.** iButton Reader or iButton+Keypad
- B.** Front Handle Set
- C.** Latch
- D.** Battery Case Fixture
- E.** Battery Case
- F.** Back Set
- G.** Back Handle
- H.** Battery Case Cover

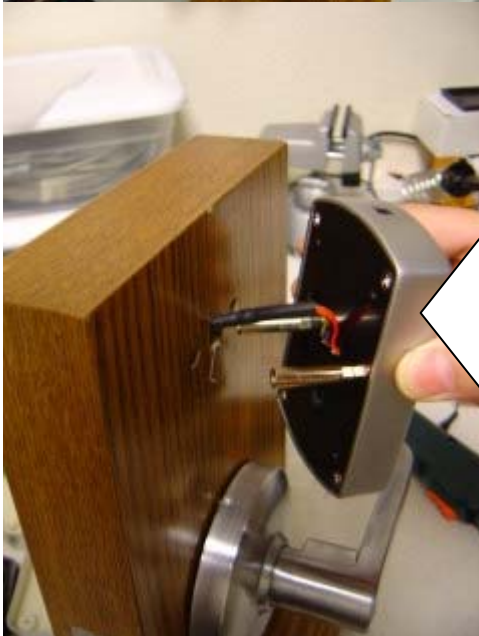
Detail Step by Step (Keypad lock example. Use the same one to installation ibutton reader)



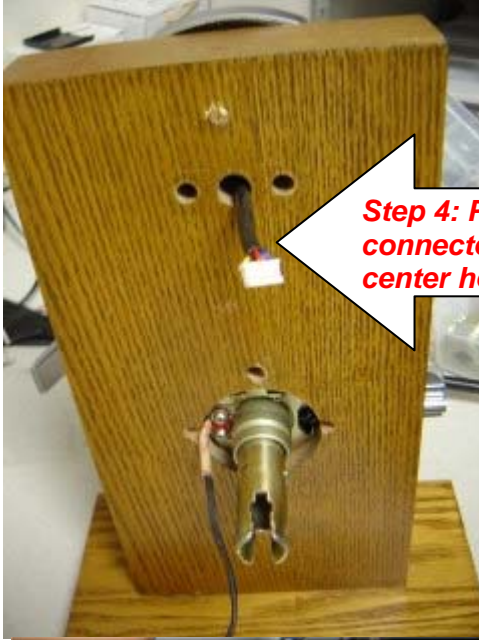
Step 1: Install latch



Step 2: Install the outside lock lever and lock chassis



Step 3: Insert Keypad Case, with extension screw installed

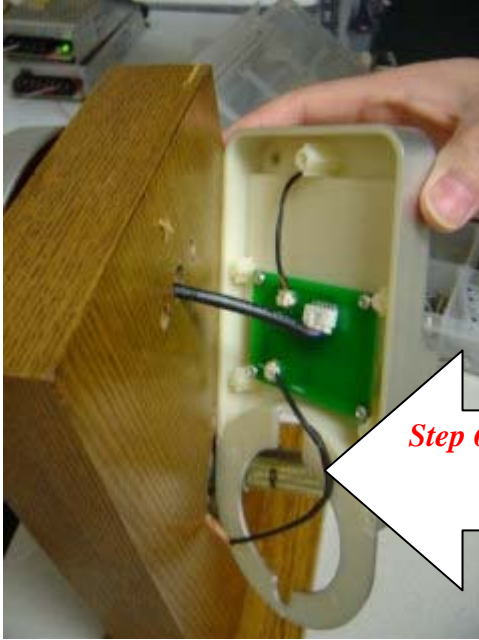


Step 4: Pull the keypad connector and wire through the center hole



Step 5: Connect to battery case before hook the battery case in place





Step 6: Connect motor wire

7. Put battery holder in place, feed the motor wire through the space below the holder:



Step 7: Secure the battery case in place. Feed the motor wire through the space below the holder. No need any cutting on the door.

8. Install Inside Rose Insert: (Avoid to catch the wire when insert the top mounting screw.)



Step 8: Install Inside Rose Insert: (Avoid to catch the wire when insert the top mounting screw.)

9. Install the battery holder Mounting Screw:



Step 9: Install the battery holder Mounting Screw.