

SPECIFICATIONS

- Power Supply:** 12V, 3A
- Main Relay:** 12V, 5A
- Operating Temp:** -18°C to +70°C (0°F to +158°F)
- Power Consumption:** 15 mA unloaded, 1.5A Maximum
- Enclosure Size:** Steel enclosure with hinged lid, 12"×12"×4"

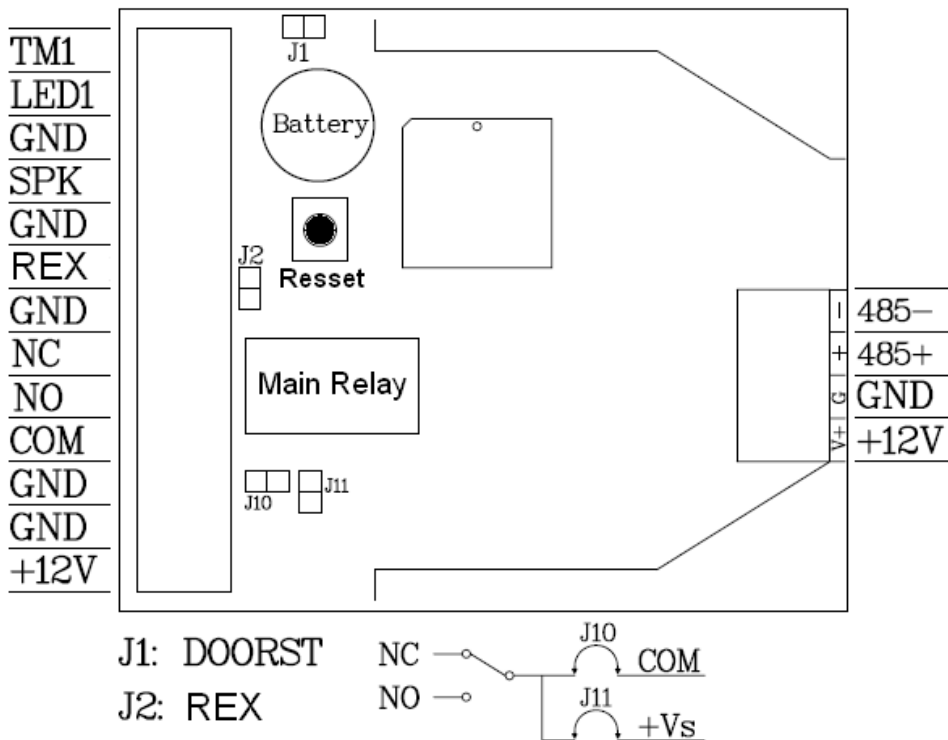
COMPONENTS

- **Reader**
- **Controller Board**
- **Power Supply**
- **Locking Device (See list)**
- **Exit button**



Reader
Control Board

CONTROLLER DIAGRAM



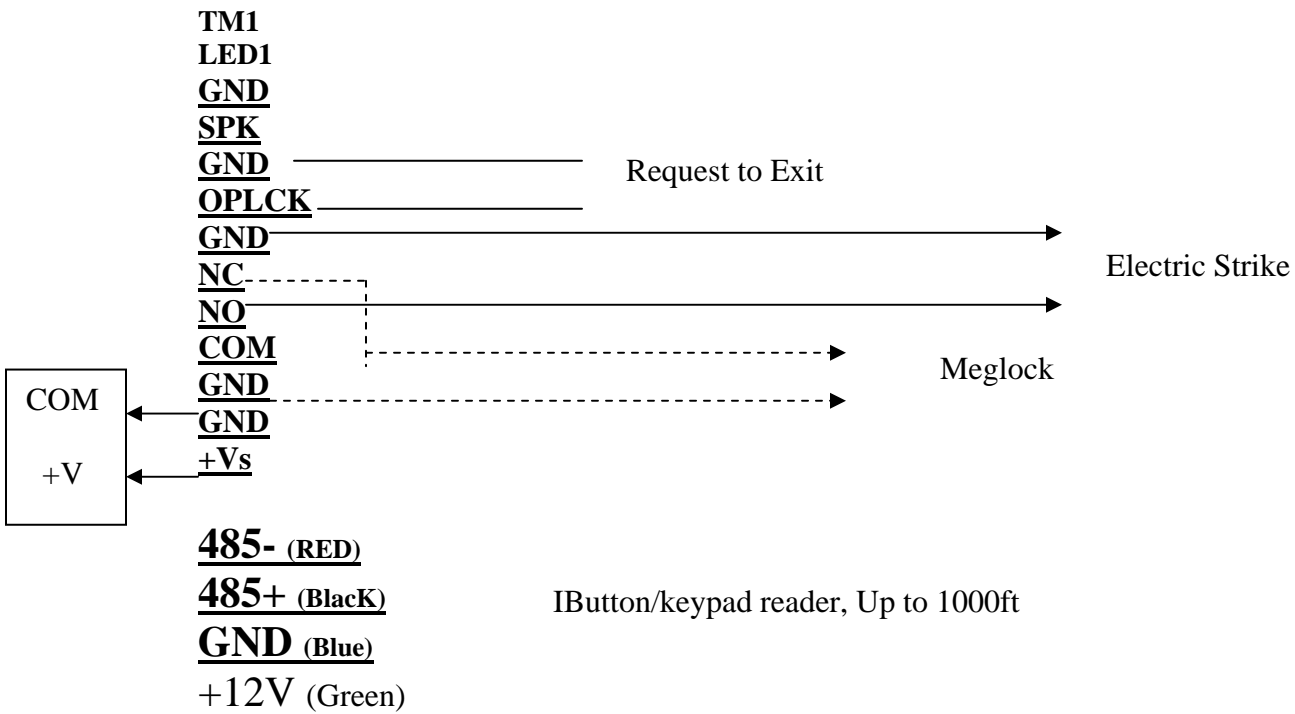
WIRE INSTRUCTION

There are many ways to connect the exit device to the controller, for your reference, we provide you the most common methods:

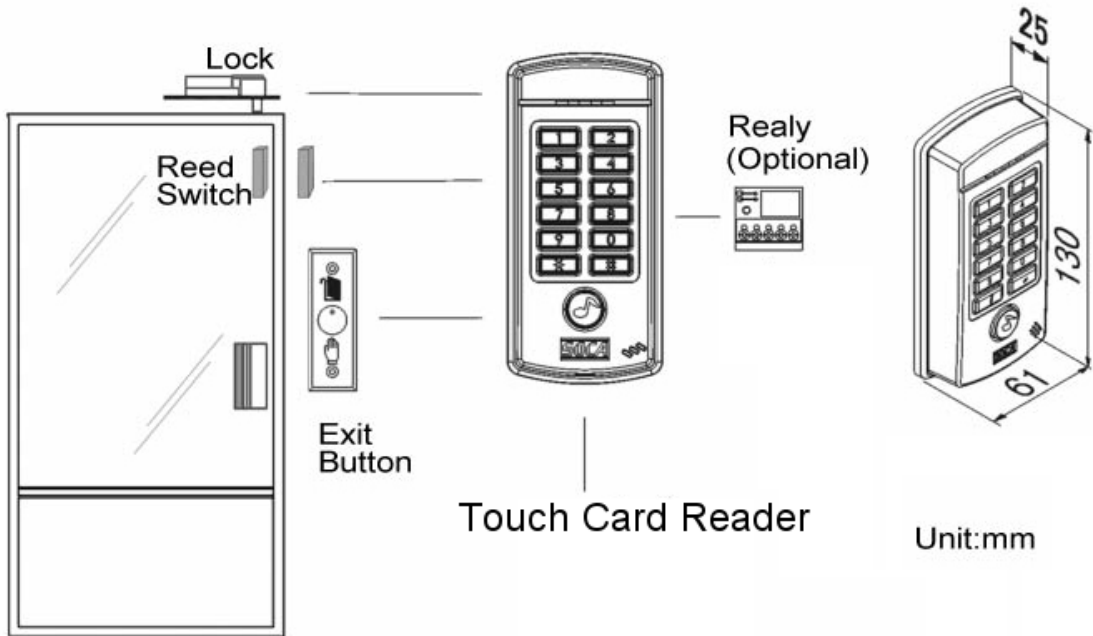
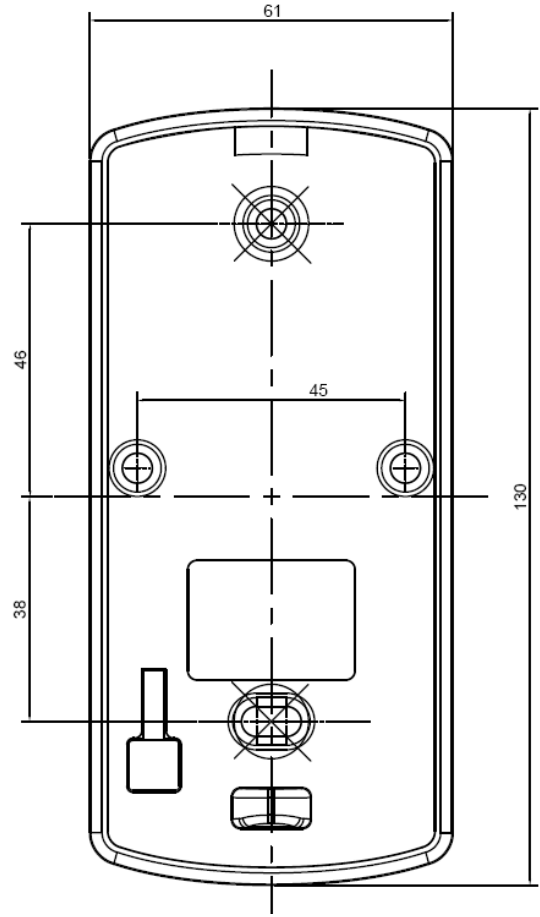
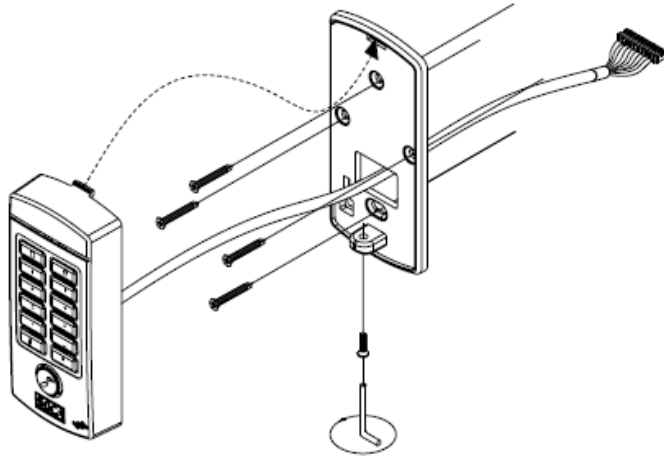
- Dry Contact:
Connect to COM and NO for Normal Open contact.
Connect to COM and NC for Normal Close contact.
- Wet contact:
Connect jumper J11 (refer to Diagram above). Connect the Normal Close (NC) or Normal Open (NO) to the positive side of the exit device, Ground (GND) to negative side of the exit device.

IButton/Keypad Reader:

With RS-485 communication method, the connection between reader and controller module can be narrow down to 4 wires (see diagram below), also the distance can be extended up to 1000ft without any additional devices.



Installation Diagram



Ordering Information:

Door Controller System

PART Number	DESCRIPTION	PART Number	DESCRIPTION
BTY12V5A	Door Controller Backup Battery (12V/5A)	EDC710MB	Eternity Door Controller Main Board for EDC710
DCCASE	Door Access Controller System Case	EDC710RD	Eternity Door Controller TM-Keypad Reader
DCTLPS	Door Controller Power Supply 12V/3.5A	FTUK	Eternity First Time User Package

Electronic Lock Device

PART Number	DESCRIPTION	FUNCTION
EBOLTLOCK	Electric Bolt Lock-SL-100A	<ol style="list-style-type: none"> 1. Door sensor (SL-100A:N.C/ SL-100B:N.C&N .0..) 2. Power Supply : DC 12V. 3. Operation current : 900mA, Holding current: 330mA 4. Fail- safe type (Power to lock). 5. Operation delay time : 0 sec., 2.5sec., 5sec., 9sec. 6. Built-in delayed egress control point. 7. Weight : 860g
EMAGLOCK	Electromagnetic Lock-SL-200/220	<ol style="list-style-type: none"> 1. Power supply: DC 12V or DC24V(Optional). 2. Operation current: 500mA@12V or 250mA@24V 3. Holding Force : 600LBS. 4. Fail-safe type (Power to lock). 5. SL-200 Built-in lock status LED's indication. / SL-200S No lock status LED's indication. 6. SL-200T Built-in delayed egress control point.SL-200D Double lock 7. Weight:2000g
MLBRKT01	L&Z Bracket for magnetic lock	<ol style="list-style-type: none"> 1. To used with SL-200 magnetic lock. 2. Suitable for in-swing door. 3. Dimensions: small L bracket: 220x63.5x63.5(mm) 4. Dimensions: F bracket: 220x61x89.5(mm) 5. Dimensions: Large L bracket:265x38x76(mm) 6. Weight:1200
MLBRKT02	Armature plate housing	<ol style="list-style-type: none"> 1. Specially for the use of SL-200 armature. 2. Suitable for 90° out-swing door. 3. Sturdy built for durability. 4. Simple and easy installation, With screw position adjustable function. 5. Dimensions: 193 x 45 x 12.7 (mm) 6. Weight:153g 7. Dimensions: 195x72x19(mm) 8. Weight: 260g
BLBRKT01	Surface Mount Bracket for Dead Bolt Lock	<ol style="list-style-type: none"> 1. To be used with SL-100 Dead Bolt Lock. 2. Suitable for all types of 90° or 180° door. 3. Sturdy built for durability. 4. Simple installation without knocking any holes out. 5. Able to integrate with UB-100 glass holder. 6. Dimensions: 230 x 45 x 46(mm). 7. Weight: 590g. 8. Optional of BR-100C Bracket available.
ESTRIKE	Electric Strike Lock	<ol style="list-style-type: none"> 1. Power supply : DC 12V. 2. Operation Current:360mA 3. SL-320F:Fail-safe type (Power to lock). 4. Suitable for wooden , aluminum and hollow metal doors. 5. To be used with auxiliary lock.