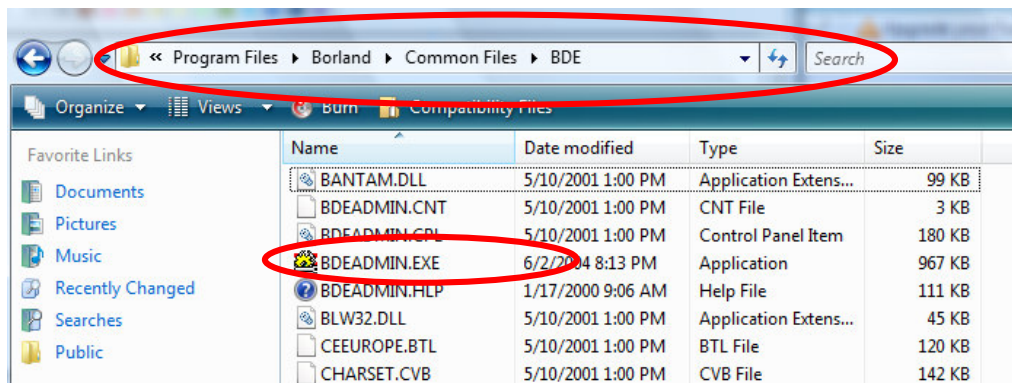


## Temporary fix for iKeypadLock Software under Window Vista

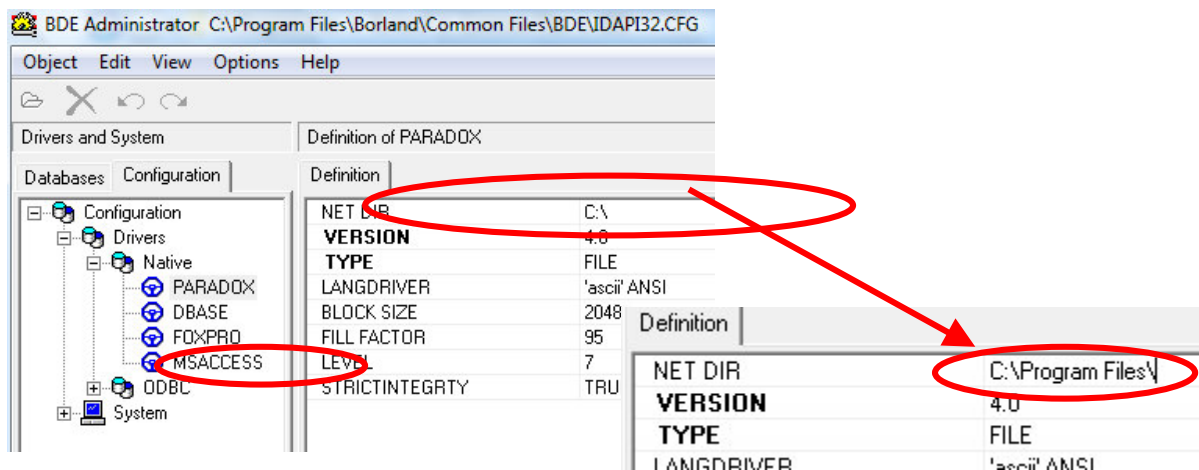
We will inform you the upgrade once we finish the complete installation file.

1. Log on as admin user.
2. Install program as normal.
3. Before start program, locate the BDEadmin.exe file located at `c:\program files\Borland\Common Files\BDE\`



4. Double click BDEADMIN.EXE. The following window opens. Open the `Configuration\Drivers\Native\Paradox`.

Change the Circled `Net Dir` From `C:\` to `C:\Program Files\`



5. Save the change by click here



6. You might experience some delay or no-response after you save the change. Just close the BDE window. It won't effect to save the changes.
7. Run iKeypad lock software.